



Integra

Strengthening the evidence base
for integrating HIV and SRH services

The effect of family planning and HIV service integration on unmet need for family planning and HIV/STI protection

Averie Baird, Isolde Birdthistle, Kathryn Church



Analysis

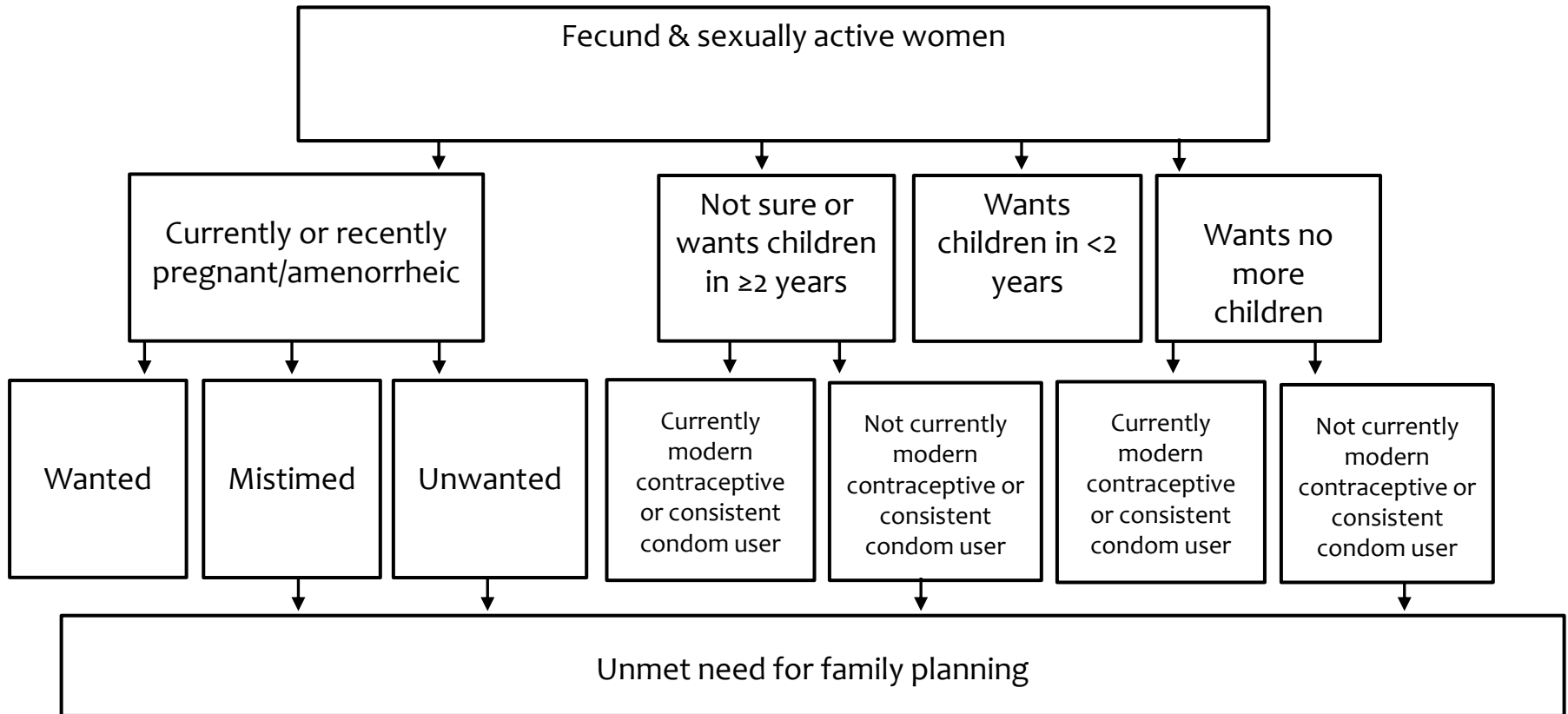
- Ro (recruitment) and R1 (6 mos. later)
- Data from Kenyan FP-client cohort

Aims

- To understand unmet need for FP and HIV/STI protection in the cohort
- To assess the short-term effect of the Integra intervention on unmet need outcomes

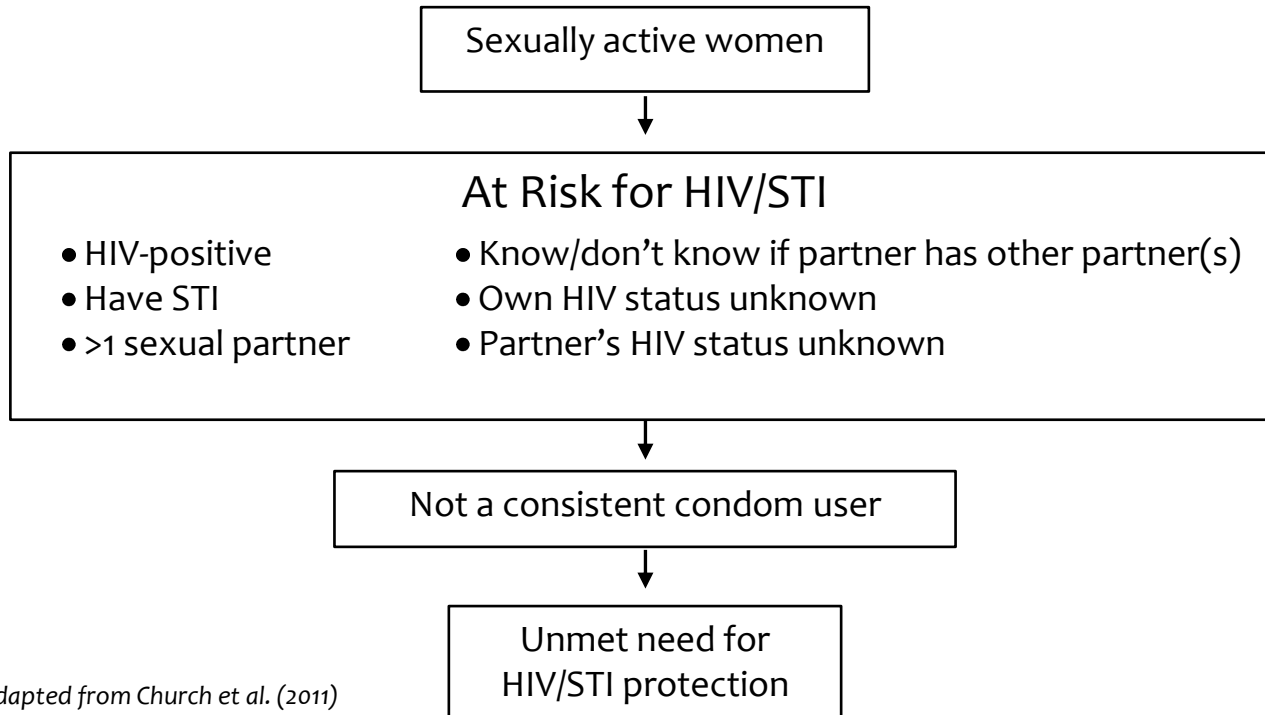


Definition: Unmet need for FP



Adapted from Church (2011) and Westoff (2006)

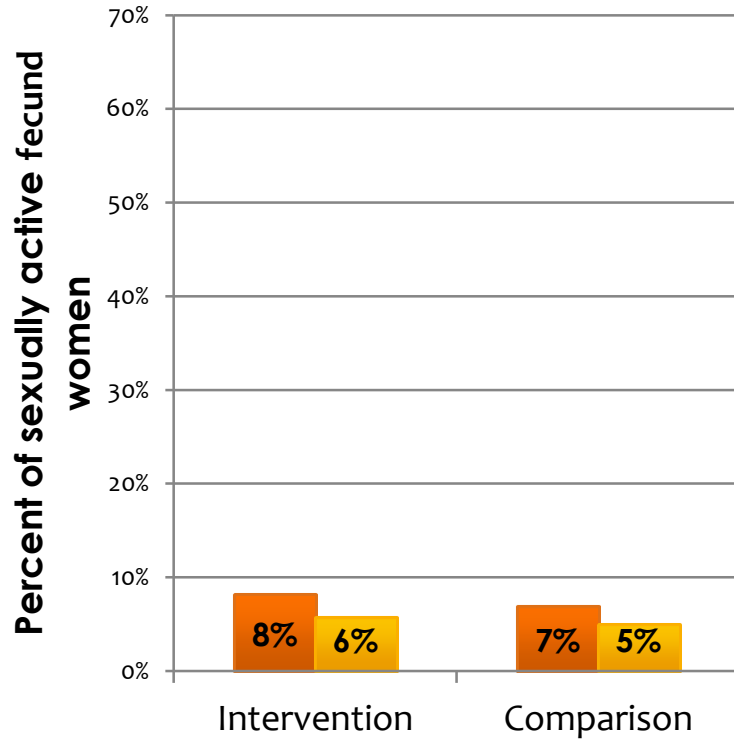
Definition: Unmet need for HIV/STI Protection



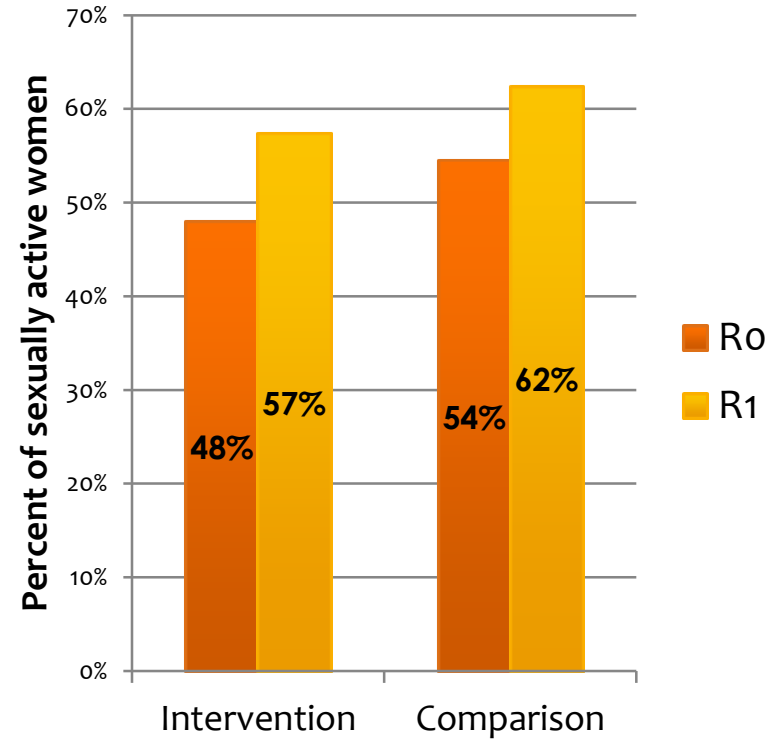
Adapted from Church et al. (2011)

Results

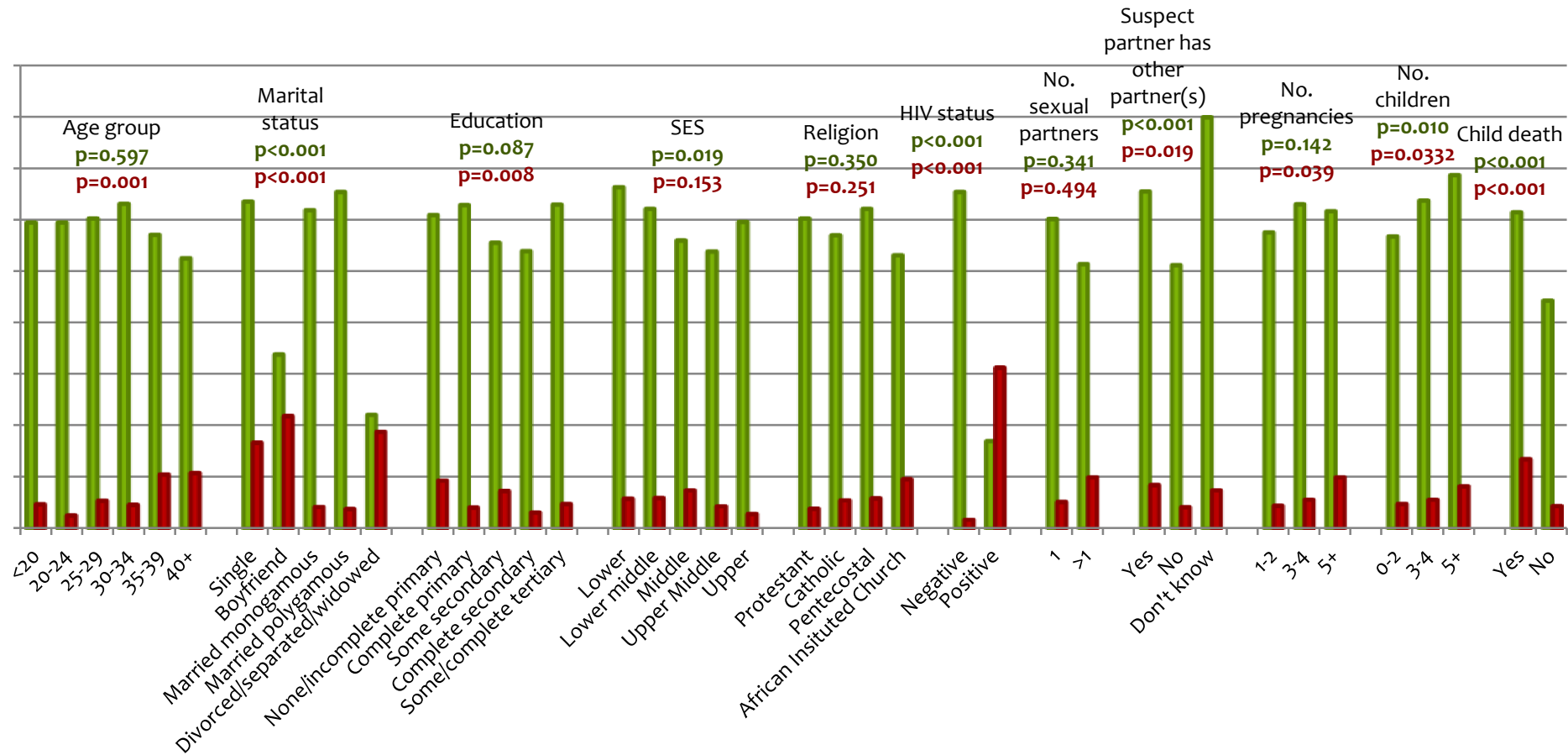
Unmet need for FP



Unmet need for HIV/STI protection

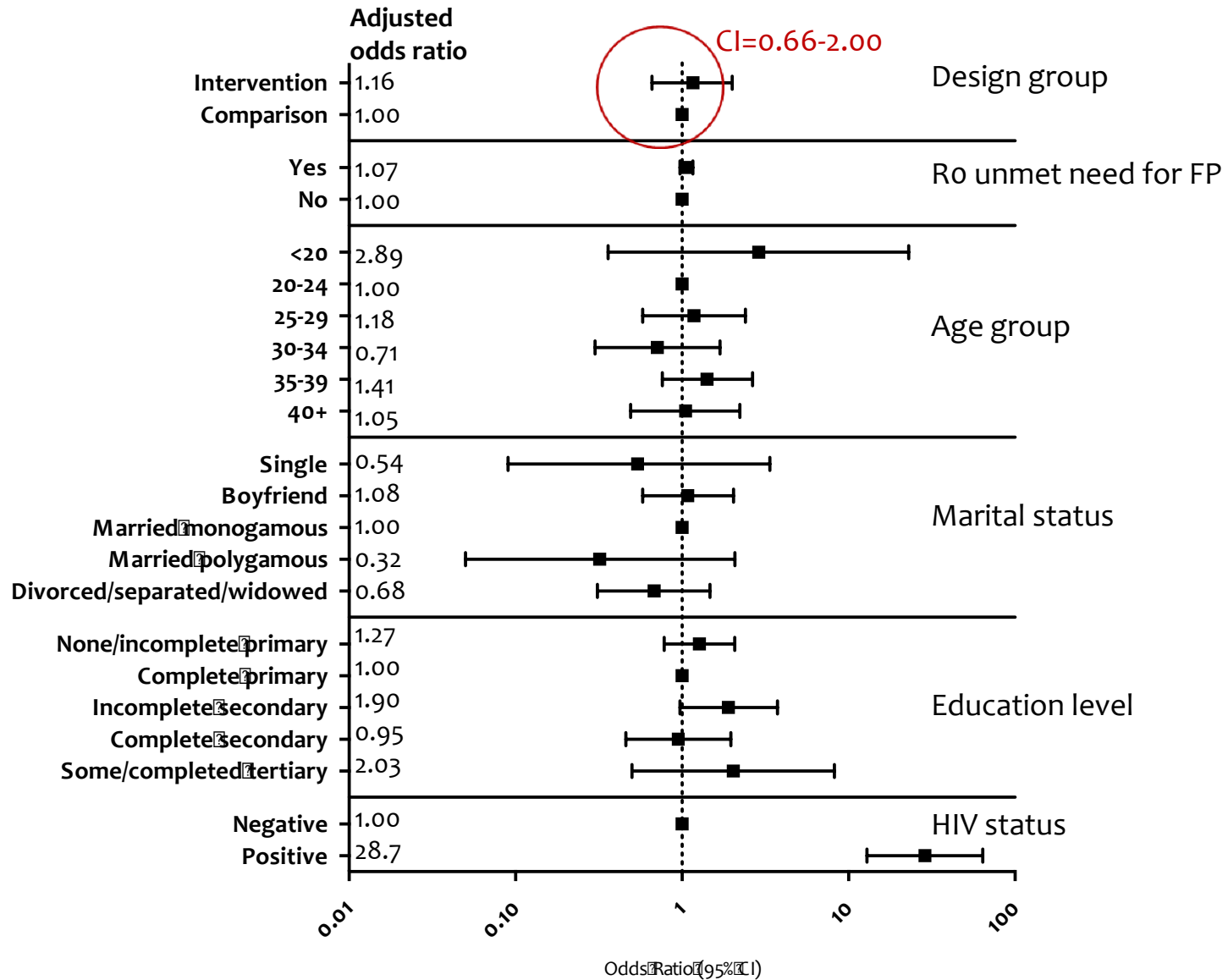


Distribution of unmet need outcomes at R1

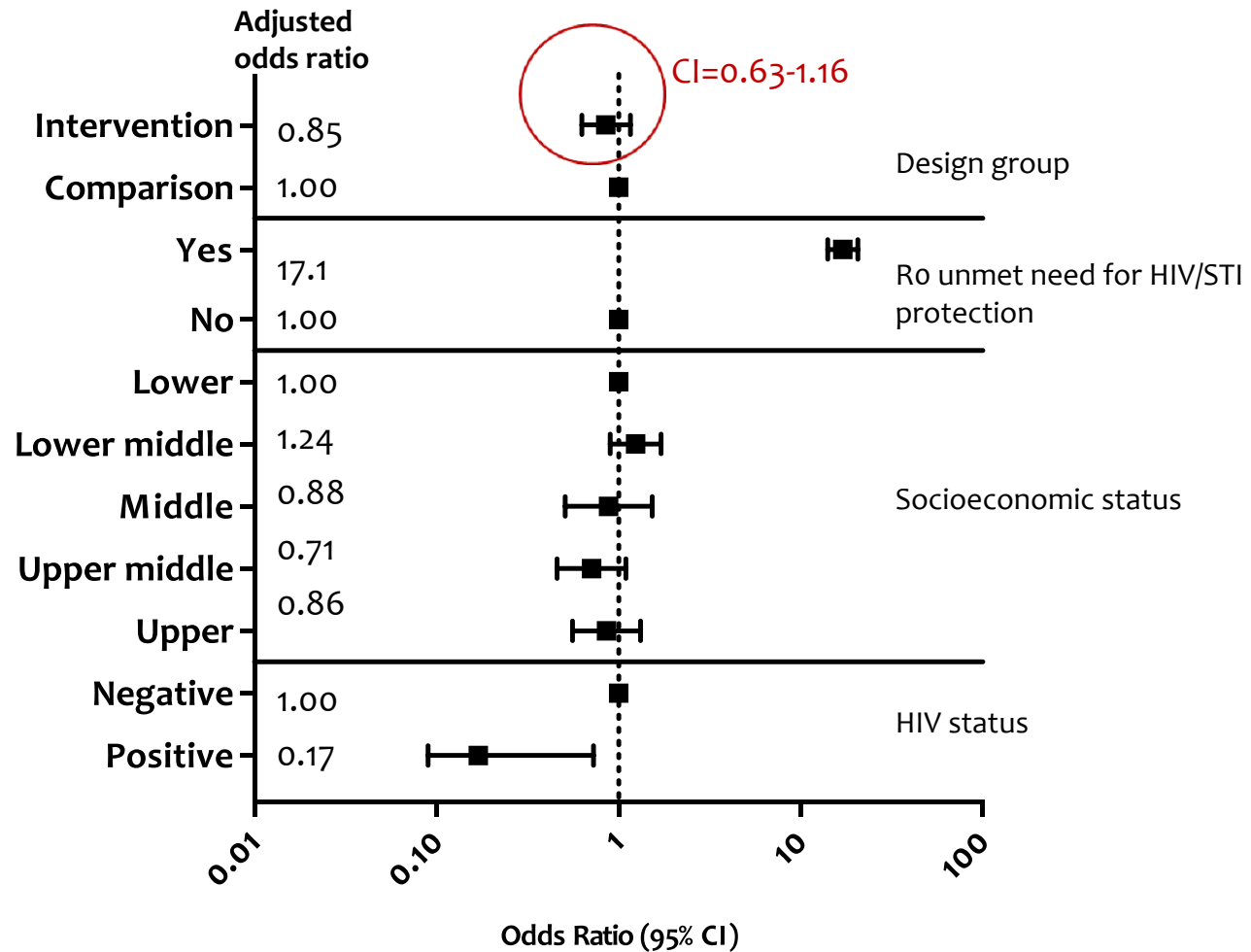


■ Unmet need for HIV/STI protection (among sexually active women)
■ Unmet need for FP (among sexually active fecund women)

Unmet need for FP at R1 Profile



Unmet need for HIV/STI protection at R1 Profile



Limitations

- Definition of outcome variables
- Measurement bias
- Underpowered to measure unmet need outcomes

Conclusions

- Unmet need for FP decreased (not significantly) between R0 and R1, but a similar decrease was seen in both intervention and comparison facilities
- Unmet need for HIV/STI status increased significantly from R0 to R1
- Unmet need outcomes differed markedly by HIV-status
- Integra intervention did not affect either unmet need outcome in the short-term

Next steps: explore findings in more detail

Thank you!

www.integrainitiative.org

Contact: averie.baird@gmail.com

