

# 5 YEAR DATA AT GBVR CENTRE AT COAST PROVINCIAL GENERAL HOSPITAL



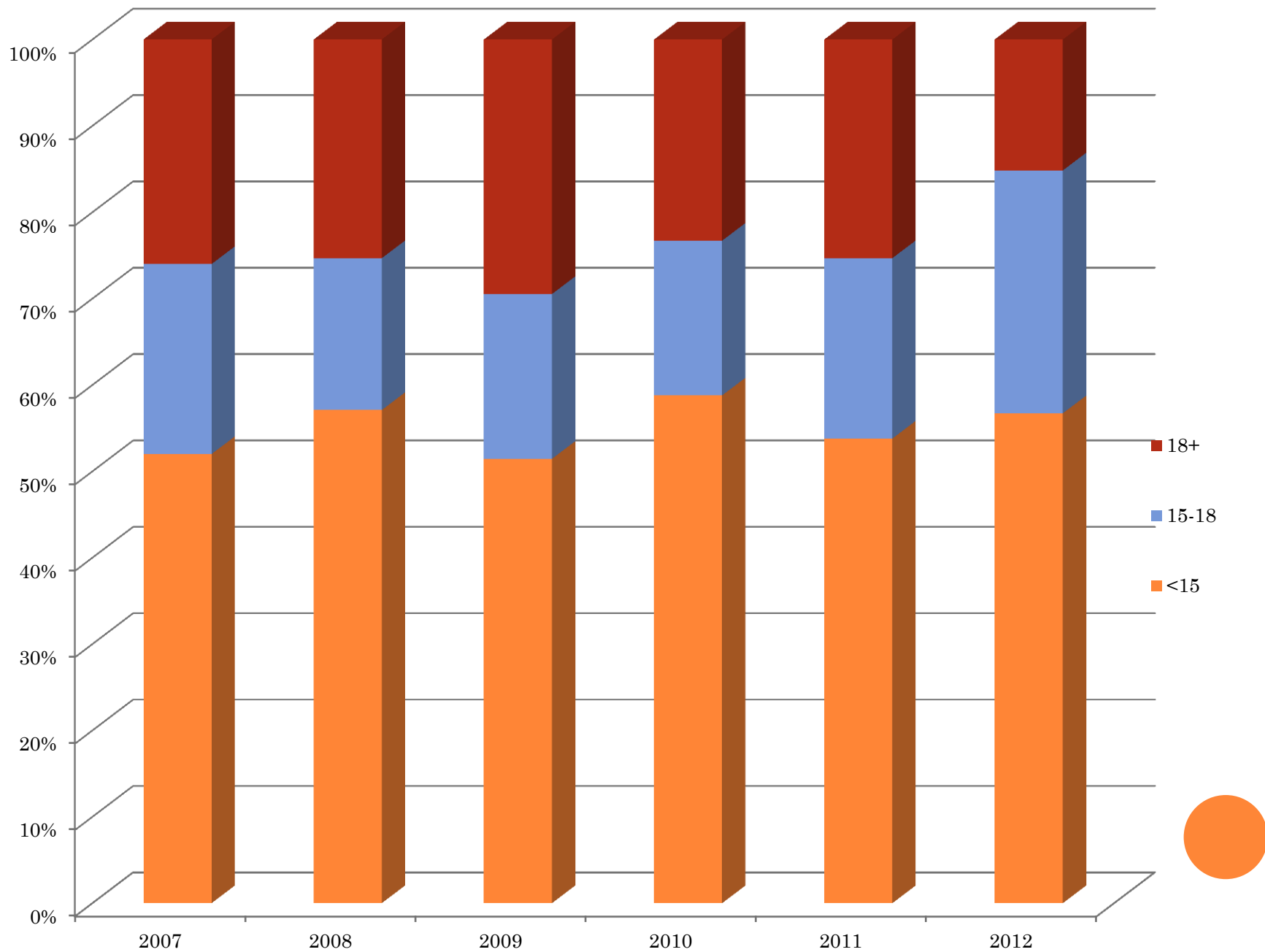
*Soita Musimbi\**, *Elizabeth Aroka*<sup>+</sup>,  
*Lou Dierick*<sup>+</sup>, *Marleen Temmerman*<sup>#</sup>  
*\* Coast Provincial and General  
Hospital (CPGH), Mombasa, Kenya  
+ International Centre for  
Reproductive Health, Kenya (ICRH-K)  
# Ghent University, Belgium*

# DATA RESULTS

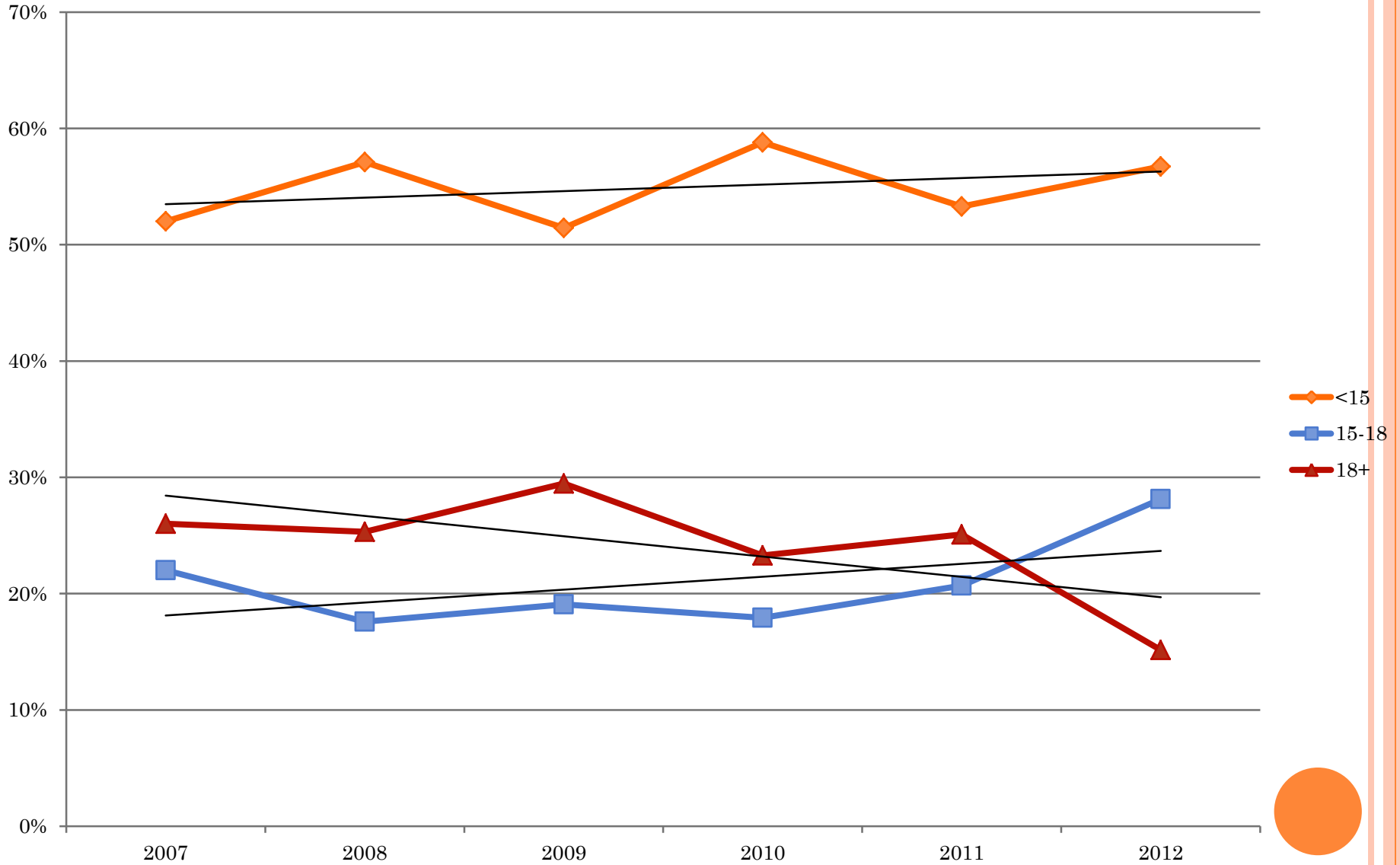
- Data collected from the start in August 2007 to August 2012 indicate that **3,064** total survivors were seen at the centre which translates to about **50** survivors per month and **600** per year.



## Survivors: Proportion of Age Groups



## Survivors age groups: No significant Trend for in/decrease



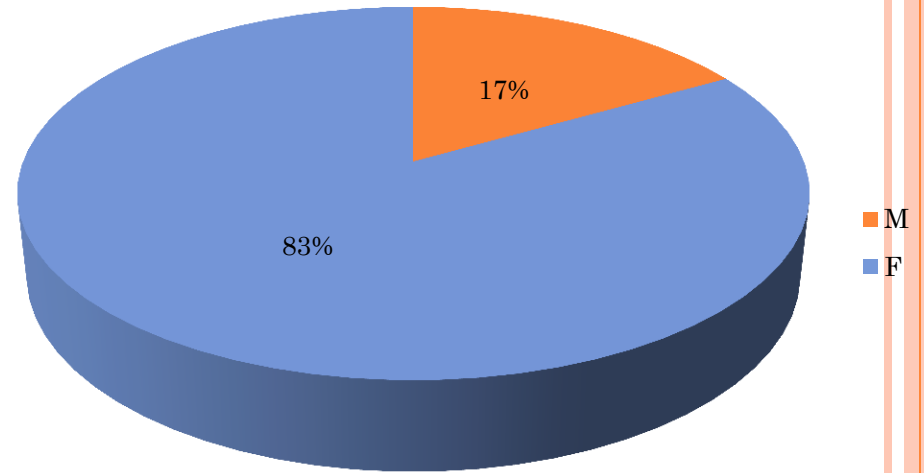
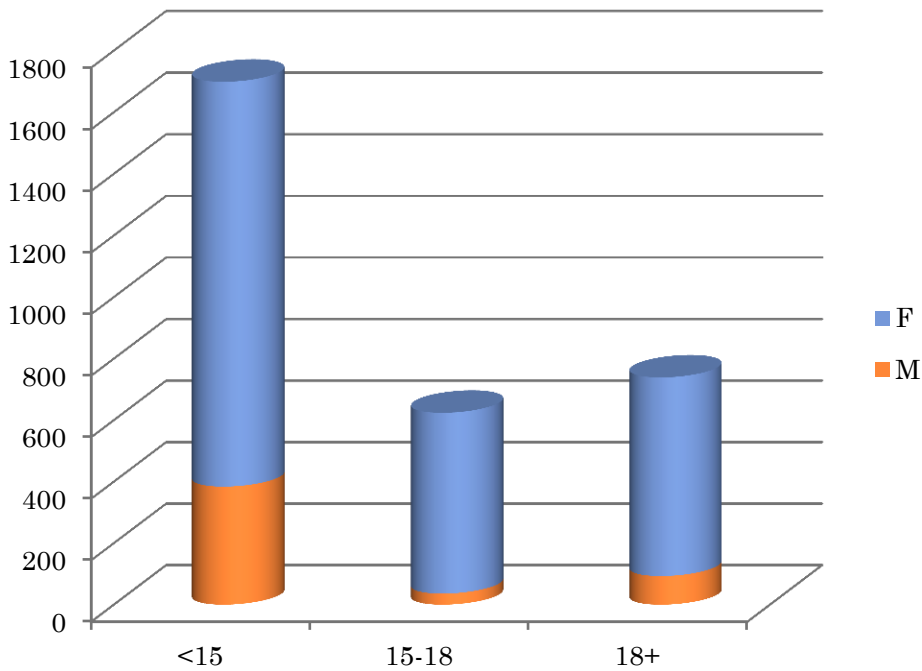
## CT

- No significant trend for increase of cases in any age group. There is hence no reason to see a sudden 'epidemic' of e.g. child abuse.
- Striking element is that from the moment the services were offered in CPGH, the children are the majority of survivors brought to the centre.
- This is in line with findings from other public health facilities, and in contrast with private settings.

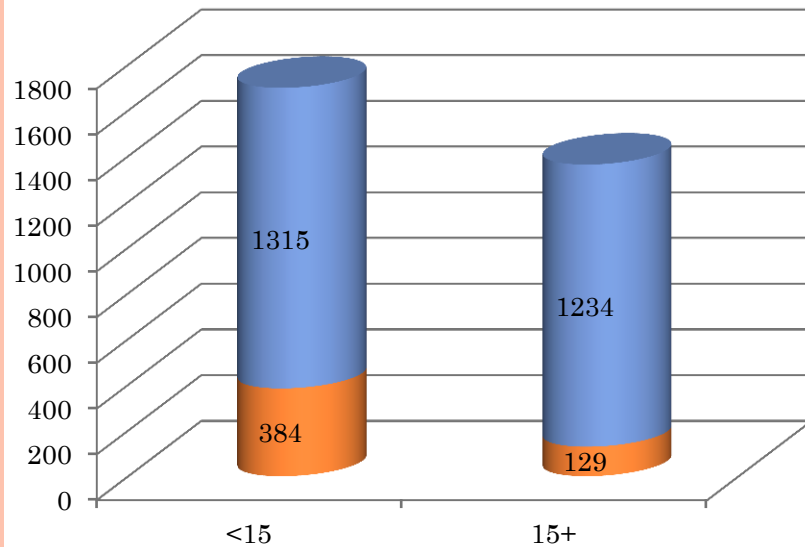
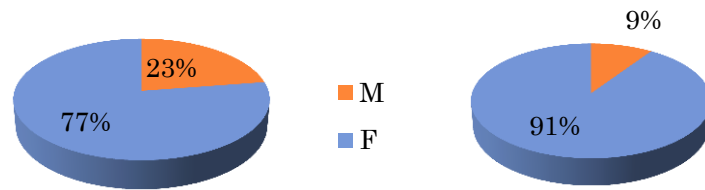


# GENDER DISTRIBUTION

## Survivors: Gender by Age Group



# GENDER BY AGE

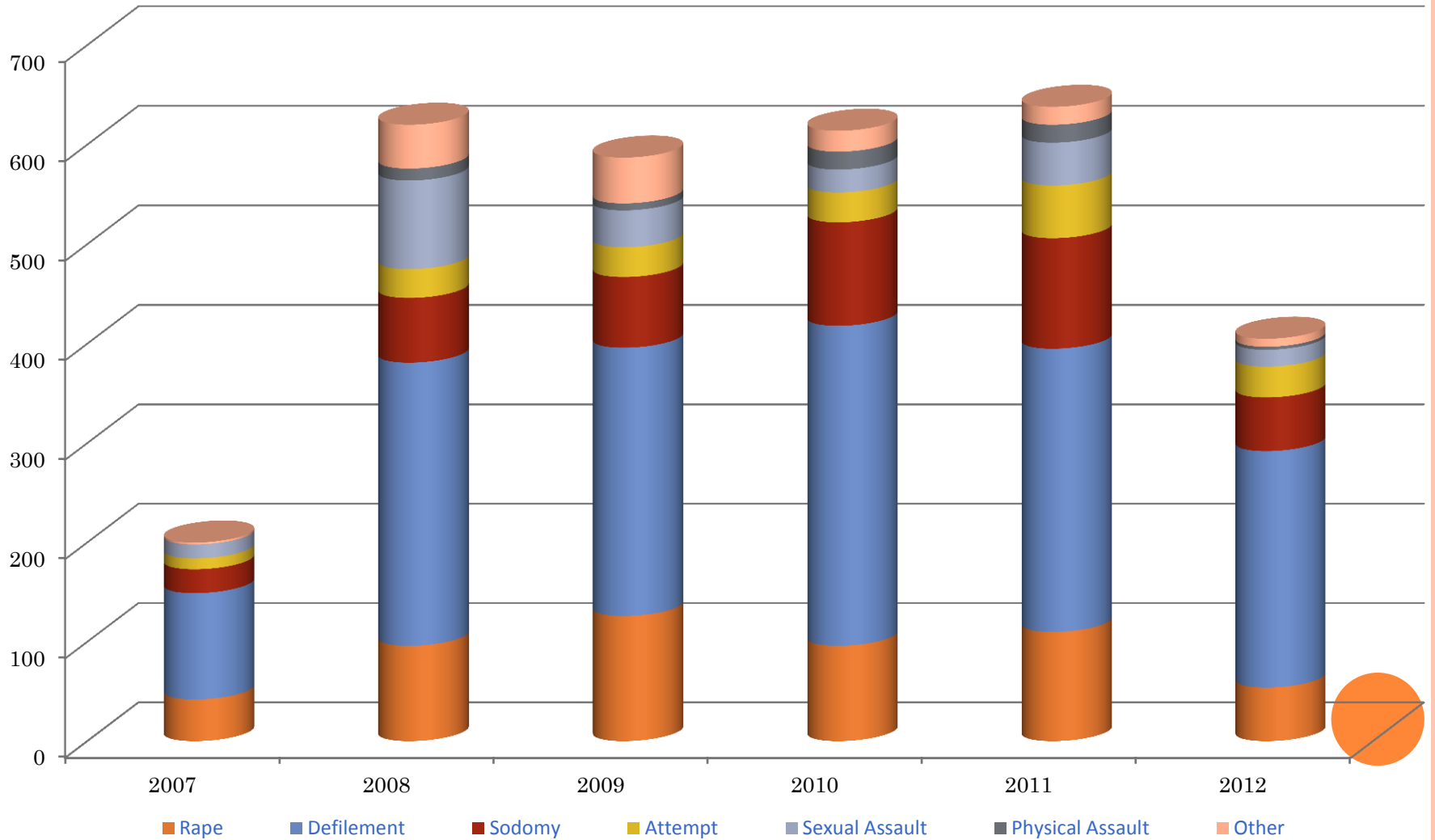


There is a marked difference between the age groups: Below 15 we find 23 % of boys, whilst the older age group 15 and above has 91 % girls/women and only 9 % boys / men.



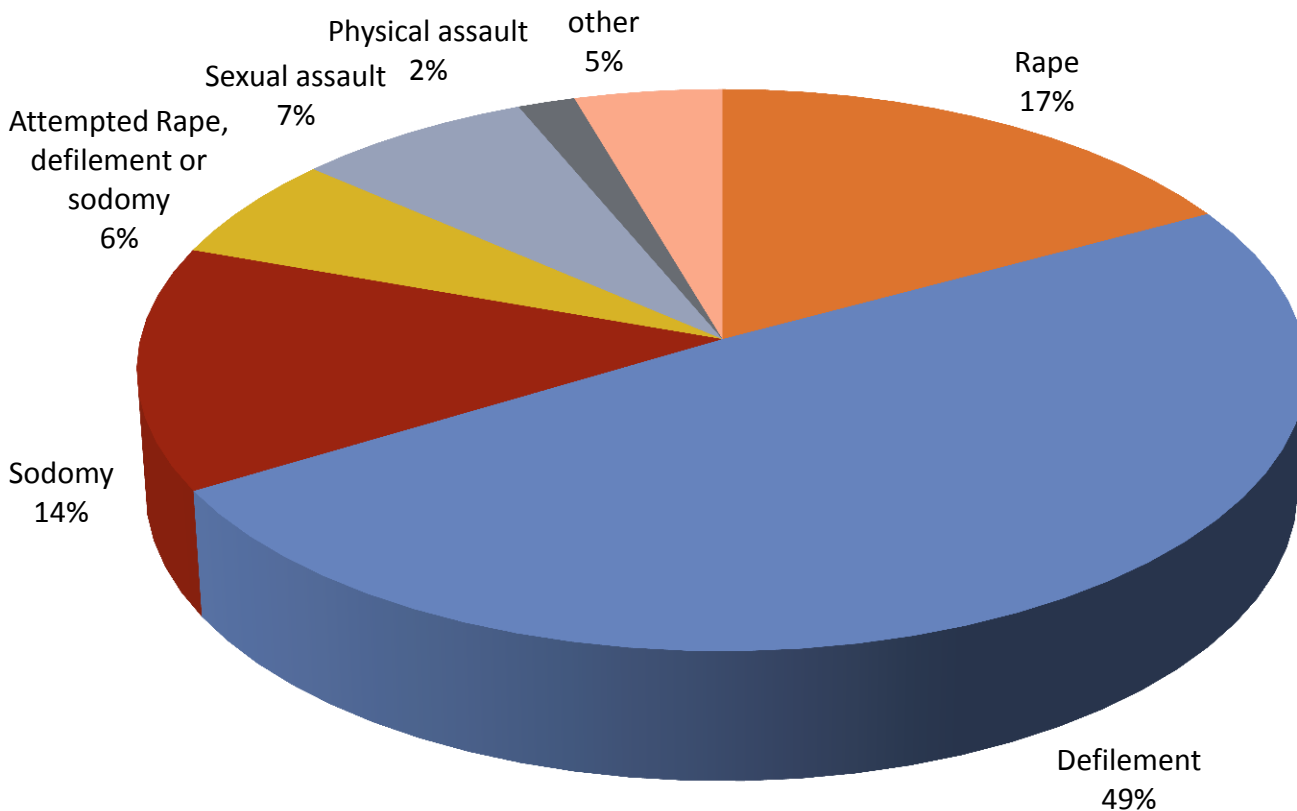
# TYPES OF OFFENSE

## Annual Totals by Type of Offense





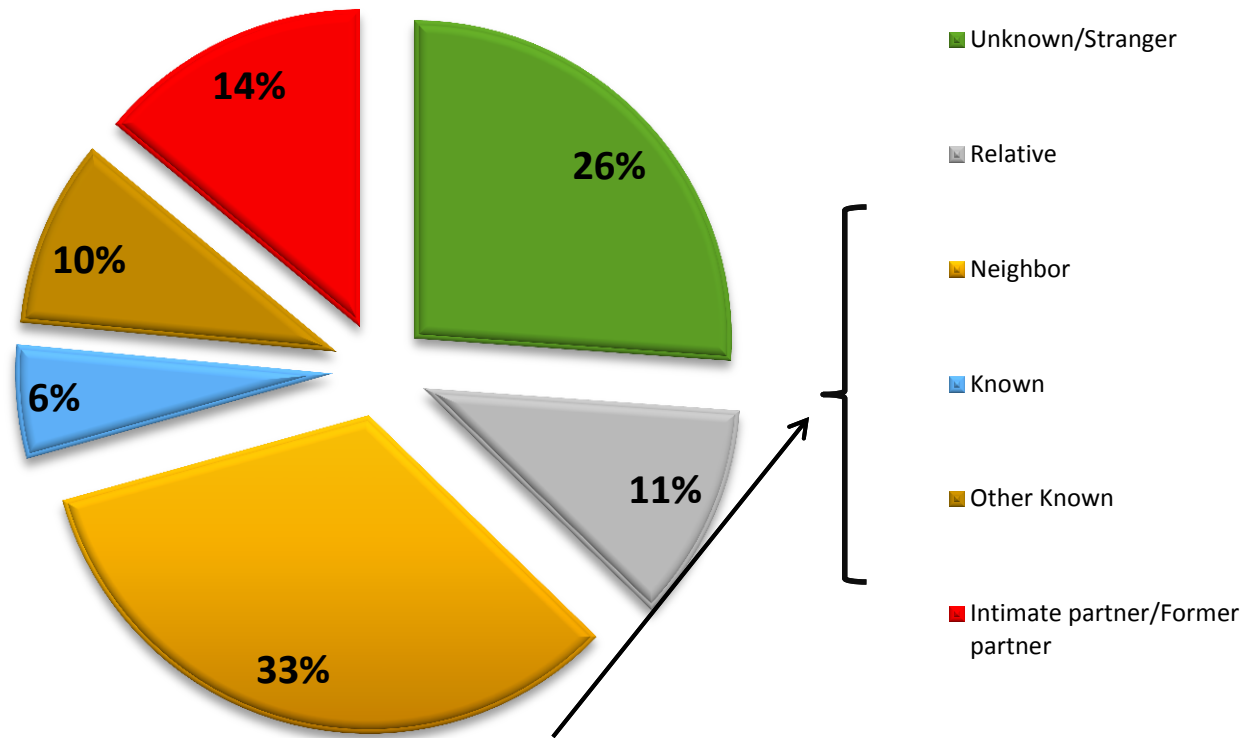
CT



- Rape, defilement and sodomy (penetrative sex), including attempts, make out the bulk of offenses attended to at the centre (86 %).



# GBVRC: PERPETRATORS' RELATIONSHIP TO SURVIVORS



Three quarters of perpetrators are known to the victim



## IN SUMMARY

- Children are the majority of survivors brought to the centre
- No significant trend for increase of cases in any age group
- 1 in 5 of survivors are male with 4 in 5 being female
- Rape, defilement and sodomy (penetrative sex), including attempts, make out the bulk of offenses seen at the centre (86 %).
- 74% of perpetrators are known to survivors

