

**The MOMI project: Reducing maternal and newborn mortality and morbidity in the year after childbirth through combined facility- and community-based interventions in Kwale district, KENYA**

**Christine Katingima**

**Integration for Impact RH & HIV Services in Sub-Saharan Africa Conference  
13<sup>th</sup> September 2012**



**ICRH**Kenya  
International  
Centre for  
Reproductive  
Health - Mombasa



# Methods

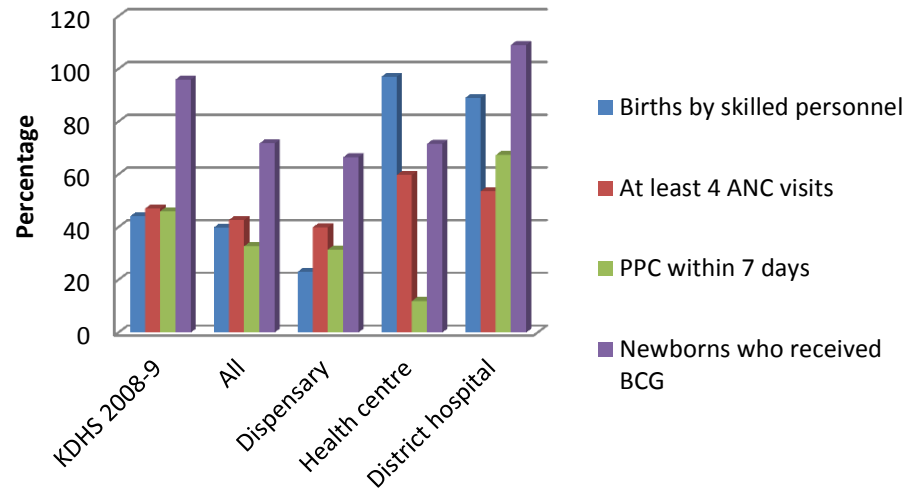
- **A set of case studies in four African countries**
  - Each case being a ‘health district’
  - Five phases following the logic of health systems research framework
  - Comparison of process and outcome before and after intervention at each site and across sites
- **Phase one: detailed situational analysis & pre-existing knowledge**
  - Review of maternal and newborn health policies
  - Stakeholder causal analysis workshop to discuss postpartum care challenges
  - Analysis of data and indicators collected at study sites:
    - Coverage and type of service at each level of care
    - Referral systems
    - Available workforce
    - Cost of service

# Findings

## Postpartum care (PPC) services

- Comprehensively addressed in the MCH/RH policy though implementation is a challenge

Utilization of maternal and child health services, Kwale- Jan 2012



## –Not fully integrated in child health clinics

- 32.7% of women reported to access services compared to 71.7% newborns receiving BCG vaccination in January 2012
- Demonstrates that there is a missed opportunity for providing PPC for the mother